

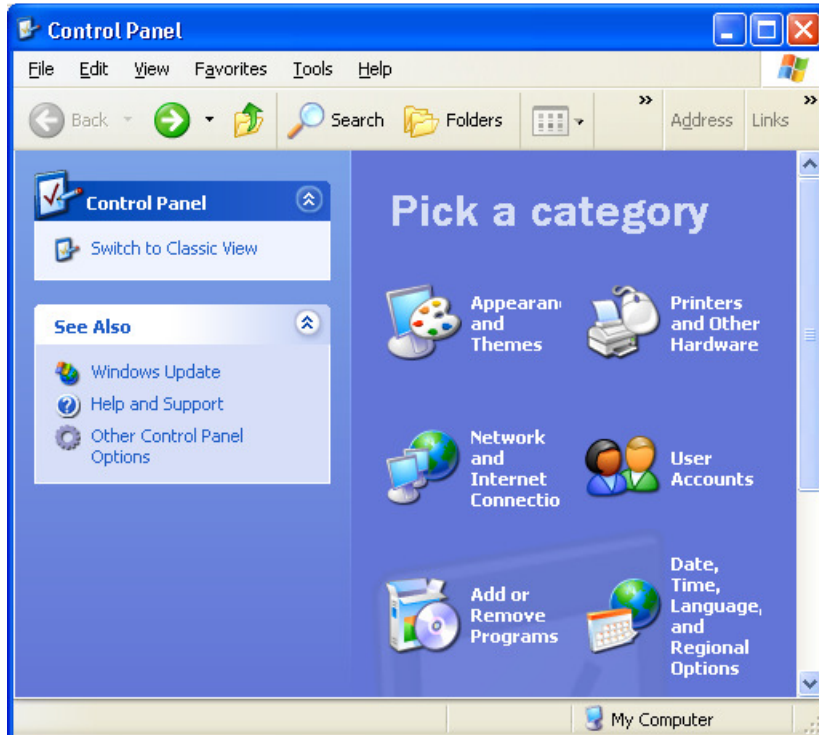
Font installation in Windows XP

Save the fonts file in a folder in your computer or Flash Memory/Pen Drive and follow the instructions below.

Step # 01

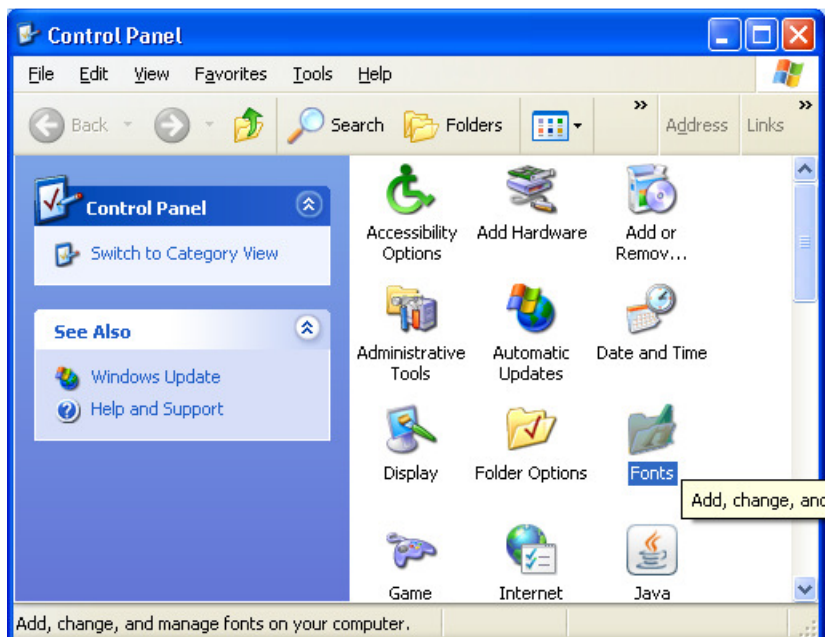
If the control panel view is as shown below, click on “**Switch to Classic View**” and go to Step # 02

If the view is not like this, go to **Step # 02**



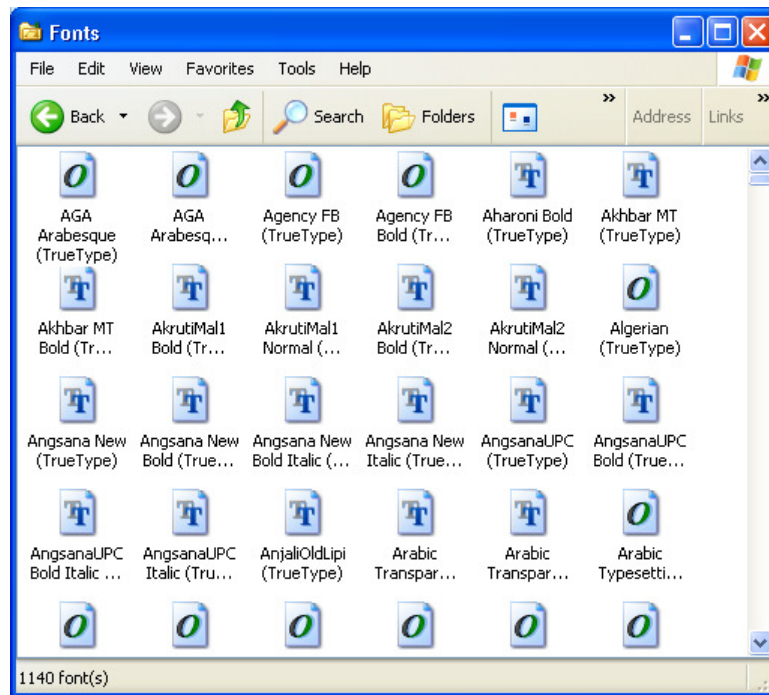
Step # 02

Double Click on “**Fonts**”. Go to Step # 3



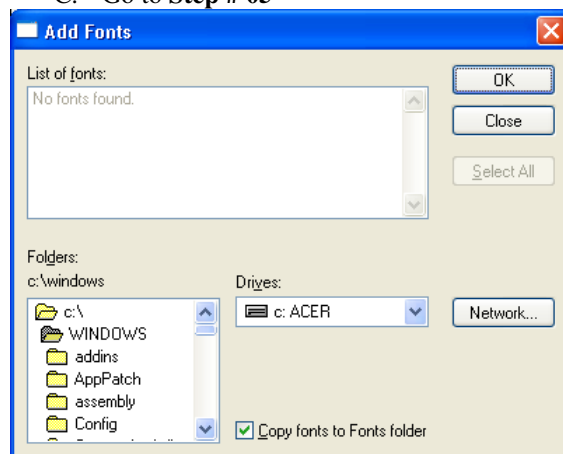
Step # 03

Select “**Install new font..**” from **File Menu**. Go to step # 04



Step # 04

- A. Select the drive on the right hand side.
- B. Select the folder where you have saved the fonts from the left hand side
- C. Go to **Step # 05**



Step # 05

1. Make sure there is a tick mark on the left hand side of “Copy fonts to fonts folder”
2. Click “**Select All**” & “**OK**”

